

CUT SHORT TUBE FROM PLASTIC PEN CASE

MAST & STRUT
BOOM MADE FROM
ROCKET STICKS

MAST

BOOM

STRUT

STICK SAILS TO
MAST WITH
DOUBLE SIDED
TAPE

PROFILE VIEW OF YACHT

PLAN VIEW OF YACHT

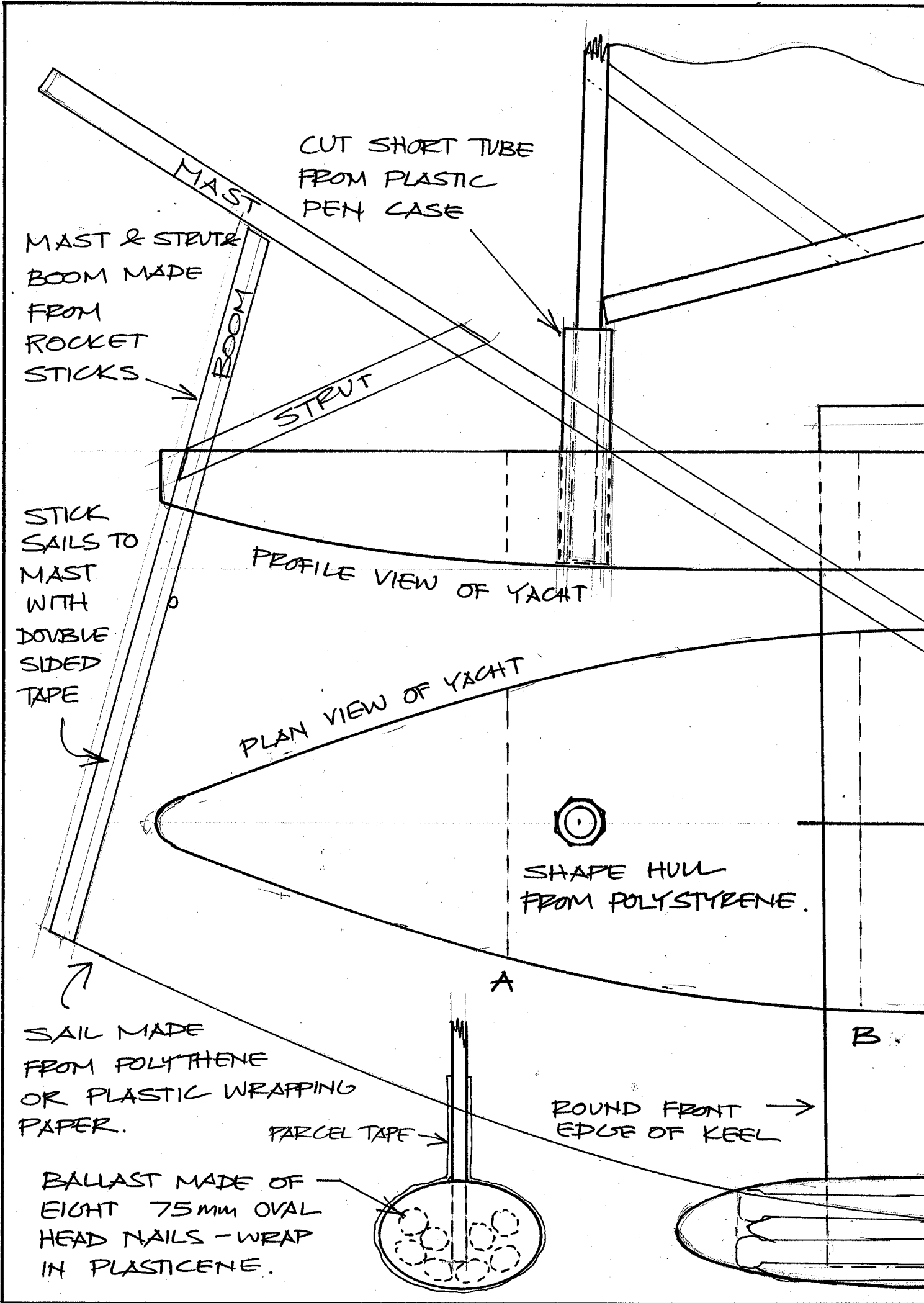
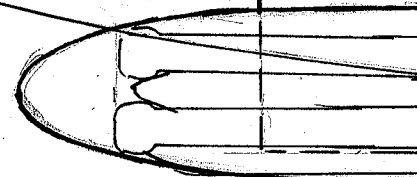
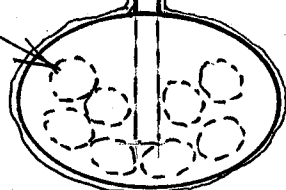
SHAPE HULL FROM POLYSTYRENE.

SAIL MADE FROM POLYTHENE OR PLASTIC WRAPPING PAPER.

PARCEL TAPE

ROUND FRONT →
EDGE OF KEEL

BALLAST MADE OF EIGHT 75MM OVAL HEAD NAILS - WRAP IN PLASTICENE.



WRAP IN PARCEL TAPE & CREATE
 STREAMLINED SHAPE FOR
 PLASTIC COVERING OF BALLAST.

PROTECT WITH PARCEL TAPE
 OF KEEL
 SHARP BACK EDGE

KEEL CUT FROM 2mm MDF.

PUDDER IS
 A MIXING
 STICK -
 TONGUE
 DEPRESSOR
 FROM
 DOCTOR

COVER HULL
 KEEL & PUDDER
 WITH PARCEL
 TAPE TO MAKE
 THEM WATER-
 PROOF.

CUT THROUGH HULL - BE
 CAREFUL OR ASK AN ADULT

SLIP KNOT

THIN CORD

HOPE IN SAIL

SHAPES OF SECTIONS AT
 POSITIONS MARKED ON
 PLAN VIEW - HALF ONLY.

